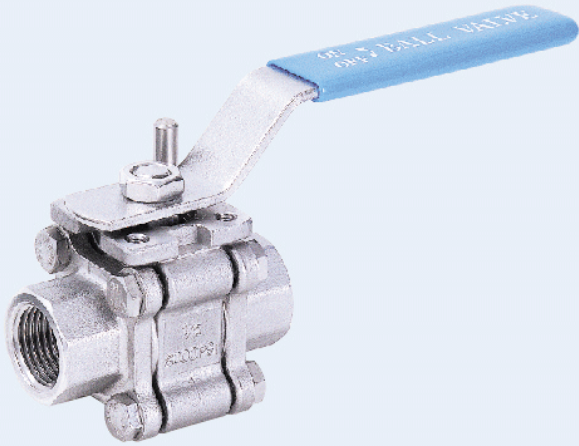


SCREWED END / BUTT WELD END / SOCKET WELD END 3-PIECE REDUCED PORT BALL VALVE



V-3W TYPE

SIZE: 1/4"~2"



STAINLESS STEEL

AISI-316 (EN10213-4 1.4408) (ASTM-A351-CF8M)

AISI-304 (EN10213-4 1.4308) (ASTM-A351-CF8)

CARBON STEEL

S-20C (EN10213-2 1.0619) (ASTM-A216-WCB)

FEATURES:

*Pipe thread in accordance with ANSI B2.1, BS 21 1973,

DIN 259/2999, ISO 228, BSPP, BSPT

*Blow-out proof stem/Reduced port

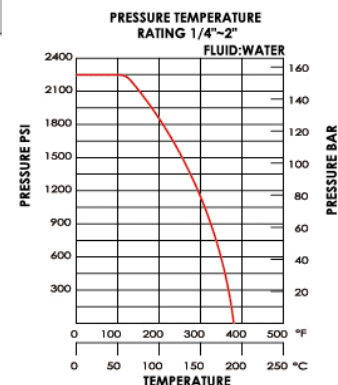
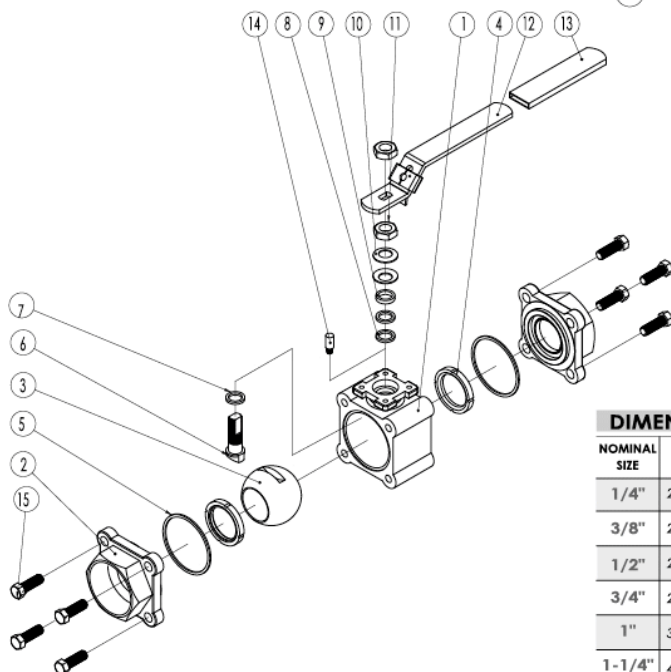
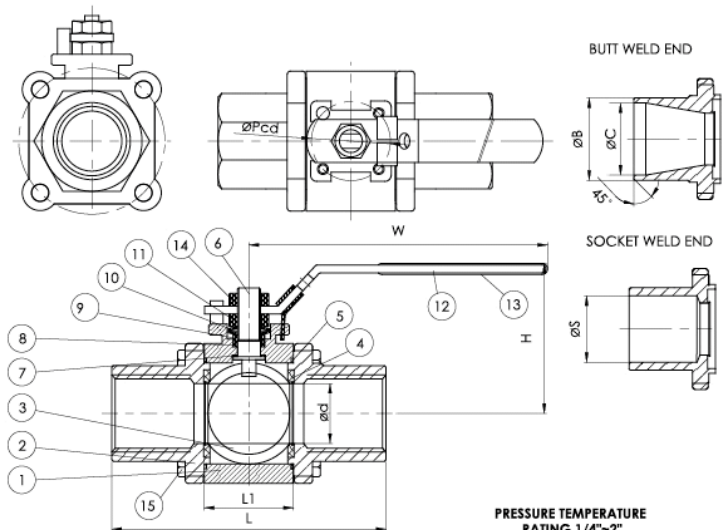
*Investment casting body and cap

***3000PSI (PN200)**

*ISO 5211 Mounting Pad

OPTION: Locking device

ITME	PARTS	Q'TY	MATERIALS	
1	BODY	1	ASTM-A351-CF8M	ASTM-A216-WCB
2	CAP	2	ASTM-A351-CF8M	ASTM-A216-WCB
3	BALL	1	ASTM-A351-CF8M	ASTM-A351-CF8
4	BALL SEAT	2	PTFE	PTFE
5	JOINT GASKET	2	PTFE	PTFE
6	STEM	1	AISI 316	AISI 316
7	THRUST WASHER	1	PTFE	PTFE
8	STEM PACKING	2	PTFE	PTFE
9	STEM BUSHING	1	AISI 304	AISI 304
10	BELLEVILLE WASHER	2	AISI 304	AISI 304
11	STEM NUT	2	AISI 304	AISI 304
12	HANDLE	1	AISI 304 or AISI 430	AISI 304 or AISI 430
13	HANDLE SLEEVE	1	PLASTIC	PLASTIC
14	HANDLE NUT	1	AISI 304	AISI 304
15	BODY BOLT	8	AISI 304	AISI 304



NOMINAL SIZE	DIMENSIONS										UNIT:mm		
	L1	øB	øC	ød	øS	H	L	øPcd	w	TORQUE kgf-cm	CV FACTOR	KG	
1/4"	20.6	18.0	12.0	8.0	14.1	49	66.2	36	116	40	4.5	0.51	
3/8"	20.6	18.0	14.0	11.5	17.6	49	66.2	36	116	40	6.6	0.49	
1/2"	20.6	22.0	17.1	12.7	21.7	49	66.2	36	116	40	7.9	0.52	
3/4"	24.8	27.0	22.5	15.0	27.2	53	71.5	36	116	60	11.2	0.73	
1"	32.0	33.5	28.0	20.0	33.9	63	96.8	42	150	78	21.0	1.34	
1-1/4"	41.4	42.0	33.5	25.4	42.6	67	108.4	42	150	110	34.0	1.83	
1-1/2"	48.5	48.0	43.0	32.0	48.7	77	116.5	50	181	155	57.0	2.91	
2"	56.5	60.0	53.0	38.0	61.1	85	128.5	50	181	220	80.0	3.99	