

FLANGE END 1-PIECE WAFER TYPE FULL PORT BALL VALVE



V-1FWH TYPE

SIZE: 1/2"~4"



STAINLESS STEEL

AISI-316 (EN10213-4 1.4408) (ASTM-A351-CF8M)

AISI-304 (EN10213-4 1.4308) (ASTM-A351-CF8)

CARBON STEEL

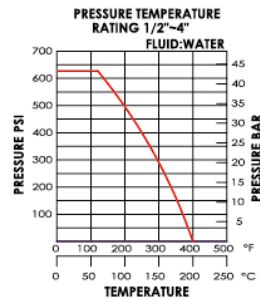
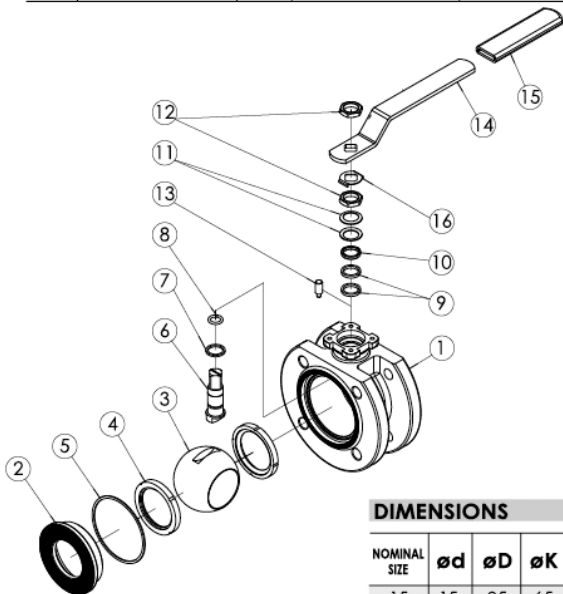
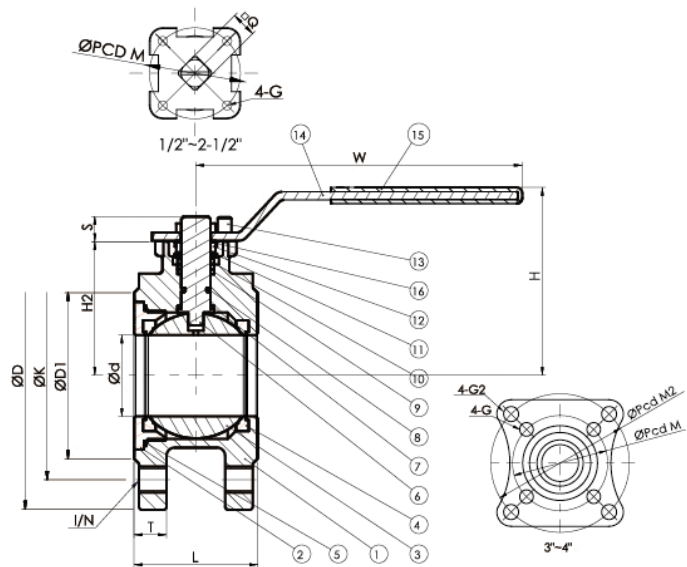
S-20C (EN10213-2 1.0619) (ASTM-A216-WCB)

FEATURES:

- *Flange: DIN 2635 PN40
- *ISO 5211 Mounting Pad
- *Anti-static device, fire safe design
- *Blow-out proof stem/Full port

OPTION: Locking device

ITEM	PARTS	Q'TY	MATERIAL	MATERIAL-C
1	BODY	1	ASTM-A351-CF8M	ASTM-A216-WCB
2	INSERT	1	ASTM-A351-CF8M	ASTM-A216-WCB
3	BALL	1	ASTM-A351-CF8M	ASTM-A351-CF8
4	BALL SEAT	2	PTFE	PTFE
5	JOINT GASKET	1	PTFE	PTFE
6	STEM	1	AISI 316	AISI 316
7	THRUST WASHER	1	PTFE	PTFE
8	O-RING	1~2	VITON	VITON
9	STEM PACKING	2~3	PTFE	PTFE
10	STEM RING	1	AISI 304	AISI 304
11	BELLEVILLE	2	AISI 304	AISI 304
12	STEM NUT	2	AISI 304	AISI 304
13	STOPPER PIN	1~2	AISI 304	AISI 304
14	HANDLE	1	AISI 304 or AISI 430	AISI 304 or AISI 430
15	HANDLE SLEEVE	1	PLASTIC	PLASTIC
16	LOCK WASHER	1	AISI 304	AISI 304



DIMENSIONS

UNIT:mm

NOMINAL SIZE	ød	øD	øK	øD1	I/N	L	T	H2	S	□Q	øPcd M	øPcd M2	G	G2	H	W	TORQUE kgf-cm	KG
15	15	95	65	45	4-M12	41	16	46	12	9	42	-	M5	-	94.4	166	50	1.58
20	20	105	75	58	4-M12	45	18	51	9.5	9	42	-	M5	-	99.4	166	55	2.14
25	25	115	85	68	4-M12	54	18	57	11	9	42	-	M5	-	104.9	166	60	2.74
32	32	140	100	78	4-M16	58	18	71	14	14	50	-	M8	-	107	161	130	4.05
40	40	150	110	88	4-M16	63	18	77	14	14	50	-	M8	-	114	200	165	4.70
50	50	165	125	102	4-M16	76	20	84	16	14	50	-	M8	-	118	200	400	6.54
65	65	185	145	122	8-M16	99	22	102	18	17	70	-	M10	-	146	326	800	11.04
80	80	200	160	138	8-M16	118	24	129	18.5	17	70	102	M10	11	173	326	860	14.89
100	96	235	190	162	8-M20	139	24	145	18.5	17	70	102	M10	11	188	326	1130	22.47