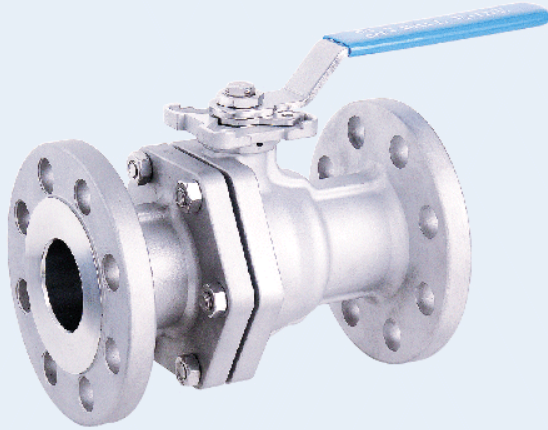


V-2FH-JIS 10K 20K TYPE

SIZE: 1/2"~4"

DIRECT MOUNTING PAD



JIS10K, JIS20K STAINLESS STEEL

AISI-316 (EN10213-4 1.4408) (ASTM-A351-CF8M)

AISI-304 (EN10213-4 1.4308) (ASTM-A351-CF8)

CARBON STEEL

S-20C (EN10213-2 1.0619) (ASTM-A216-WCB)

FEATURES:

*Flange: JIS 10K B2212

JIS 20K B2214

*Face to face: DIN 3202 F1/F4/F5

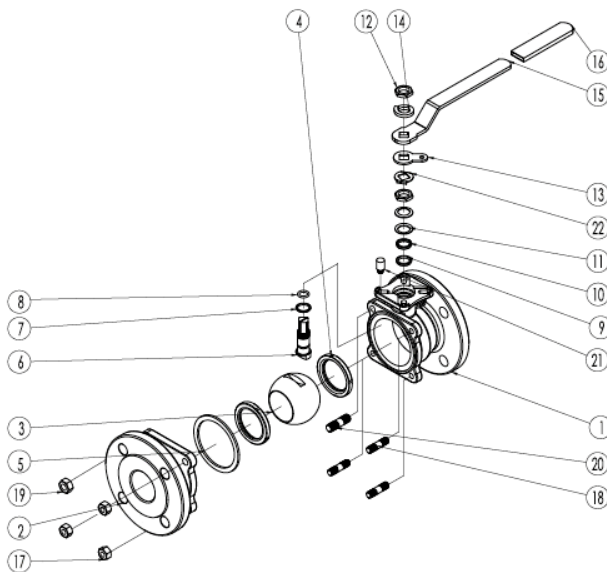
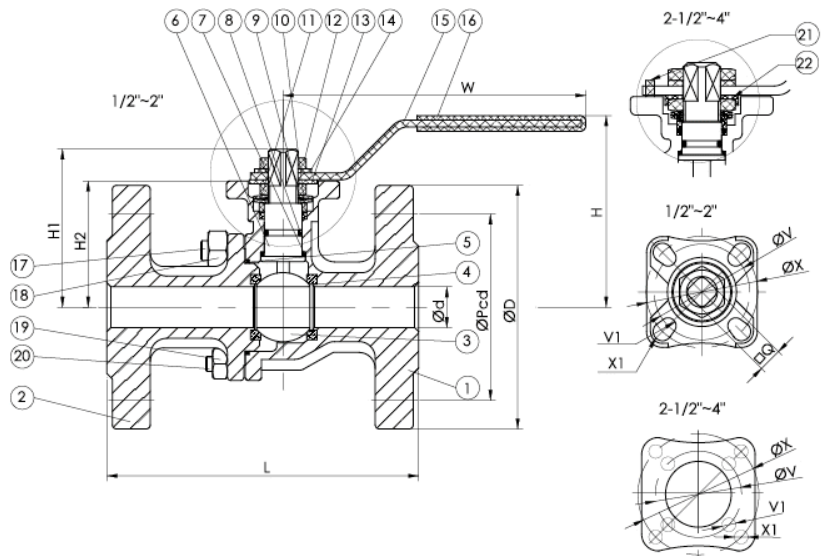
*ISO 5211 Direct Mounting Pad

*Anti-static device, fire safe design

*Blow-out proof stem/Full port

OPTION: Fixed Handle

ITEM	PARTS	Q'TY	MATERIALS	
1	BODY	1	ASTM-A351-CF8M	ASTM-A216-WCB
2	CAP	1	ASTM-A351-CF8M	ASTM-A216-WCB
3	BALL	1	ASTM-A351-CF8M	ASTM-A351-CF8
4	BALL SEAT	2	PTFE	PTFE
5	JOINT GASKET	1	PTFE	PTFE
6	STEM	1	AISI 316	AISI 316
7	THRUST WASHER	1	PTFE	PTFE
8	O-RING	1	VITON	VITON
9	STEM PACKING	1	PTFE	PTFE
10	STEM RING	1	AISI 304	AISI 304
11	BELLEVILLE WASHER	2	AISI 304	AISI 304
12	STEM NUT	2	AISI 304	AISI 304
13	STOPPER	1	AISI 304	AISI 304
14	SPRING WASHER	1	AISI 304	AISI 304
15	HANDLE	1	AISI 304 or AISI 430	AISI 304 or AISI 430
16	HANDLE SLEEVE	1	PLASTIC	PLASTIC
17	NUT*1	1	AISI 304	AISI 304
18	STUD BOLT*1	1	AISI 304	AISI 304
19	NUT*2	3.5.7	AISI 304	AISI 304
20	STUD BOLT*2	3.5.7	AISI 304	AISI 304
21	STOPPER PIN	1	AISI 304	AISI 304
22	LOCK WASHER	1	AISI 304	AISI 304



DIMENSIONS (JIS 10K) UNIT: mm

NOMINAL SIZE	ød	øD1	øPcd	L	H2	H1	W	DQ	øV	V1	øX	X1	H	TORQUE kgf-cm
1/2"	15	95	70	110	46.5	56	110.0	9	42	R3.0	-	-	89.0	50
3/4"	20	100	75	120	51.5	61	110.0	9	42	R3.0	50	R3.5	94.0	80
1"	25	125	90	130	57.5	67	136.0	11	42	R3.0	50	R3.5	95.0	105
1-1/4"	32	135	100	140	71.5	87	175.0	14	50	R3.5	70	R4.5	105.7	143
1-1/2"	40	140	105	165	76.5	92	203.0	14	50	R3.5	70	R4.5	110.7	205
2"	50	155	120	180	83.5	99	203.0	14	50	R3.5	70	R4.5	117.7	310
2-1/2"	65	175	140	190	118.5	137	277.5	17	70	R4.5	102	R5.5	155.5	370
3"	80	185	150	200	129.5	148	277.5	17	70	R4.5	102	R5.5	166.5	620
4"	100	210	175	230	145.0	163.5	377.5	17	70	R4.5	102	R5.5	182.0	970

DIMENSIONS (JIS 20K) UNIT: mm

NOMINAL SIZE	ød	øD	øPcd	L	H2	H1	W	DQ	øV	V1	øX	X1	H	TORQUE kgf-cm
1/2"	15	95	70	140	47.5	56	110.0	9	42	R3.0	-	-	89.0	50
3/4"	20	100	75	152	58.5	61	110.0	9	42	R3.0	50	R3.5	94.0	80
1"	25	125	90	165	62.5	67	136.0	11	42	R3.0	50	R3.5	95.0	105
1-1/2"	40	140	105	190	78.0	92	203.0	14	50	R3.5	70	R4.5	110.7	205
2"	50	155	120	216	83.5	99	203.0	14	50	R3.5	70	R4.5	117.7	310
2-1/2"	65	175	140	241	118.5	137	277.5	17	70	R4.5	102	R5.5	155.5	370
3"	80	200	160	283	129.5	148	277.5	17	70	R4.5	102	R5.5	166.5	620
4"	100	225	185	305	145.0	163.5	377.5	17	70	R4.5	102	R5.5	182.0	970

